



Dillbadin

PRIMARY SCHOOL

Growing through learning



IMPORTANT REMINDER PREP STUDENTS

Starting next week, our prep students will attend school full-time, Monday to Friday. We're confident they're more than ready for this exciting new step!

From our Principal

Penelope Harris

It's been a great week at DPS filled with lots of exciting learning opportunities! Students have been engaged, curious, and making fantastic progress across all subjects.

Just a reminder that there is no school on Monday due to the Labour Day public holiday.

NAPLAN

The NAPLAN tests are next week for our Grade 3 and Grade 5 students. We want to remind all students to confidently approach this opportunity and do their best.

While NAPLAN is an important assessment, it's just one moment in time. It's a chance for us to understand where students are at in their learning journey. We encourage all students to stay calm, focus on the task at hand, and give it their best effort.

Remember, we're proud of all your hard work, and this is just another step towards achieving your goals!

Good luck to our Grade 3 and Grade 5 students – we know you've got this!

Attendance

We've noticed a concerning trend of low attendance rates on Fridays. While we understand that weekends are important for family time and rest, it's important to remember that Friday is still a regular school day, and every day of learning counts.

Consistent attendance helps students stay engaged with their lessons, build strong routines, and achieve their full potential. We encourage all families to ensure their children attend school every day, including Fridays, so they don't miss out on valuable learning opportunities.

Missing school on Fridays also means missing our assemblies and the chance to be part of award presentations. Our assemblies play a vital role in our school community, as we celebrate achievements and share important information with students and families.

Remember every day counts. Thank you for your support in prioritising your child's education.

New signage

We are thrilled to see the new signage at the front of our school – the final touch of our rebrand, and it looks absolutely fantastic!



School Council

We held our School Council AGM on Thursday, and I am pleased to warmly welcome Glenn McDonald as our new President. His contribution will be invaluable, and we look forward to working together to enhance and strengthen our school community.

It's been a fantastic week at school, full of memorable moments. We hope you all have a safe and restful weekend, and we can't wait for another amazing week ahead!

Penelope

School uniform

It's been wonderful to see so many families embracing our new uniform, and the students look smart and fresh.

We want to remind everyone that all bottoms, including pants, tracksuit pants, shorts, skorts, and leggings, should be navy blue. This requirement has remained the same since 2024.

We kindly remind parents not to purchase black items for the school uniform. All bottoms—pants, tracksuit pants, shorts, skorts, and leggings—must be navy blue, as per our uniform guidelines.

We expect our students to wear their uniform with pride, which includes wearing it correctly.

We ask for your support in helping us maintain a consistent and cohesive look by ensuring that navy blue pants or shorts are worn. Thank you for helping us maintain consistency across our school community and for making us look our best!



edUTHREADS
EASY ORDERING . SUPER FAST DELIVERY . FAST AND EASY EXCHANGE

Polo Shirt Summer Dress Contrast Hoodie Bomber Jacket

Poly Yoke Skort Basic Shorts Rugby Knit Shorts Track Pants

Slouch Hat Unopak Bag

Ask your office or uniform facilitator about samples.

If you order the wrong size we offer **fast and easy** exchanges so you have the right fit.

Scan me to see your store!

JUMP ONLINE
WWW.EDUTHREADS.COM.AU

FINANCIAL ASSISTANCE

INFORMATION FOR PARENTS

Every Victorian child should have access to the world of learning opportunities that exist beyond the classroom. The Camps, Sports and Excursions Fund helps ensure that no student will miss out on the opportunity to join their classmates for important, educational and fun activities. It is part of making Victoria the Education State and the Government's commitment to breaking the link between a student's background and their outcomes.

CAMPS, SPORTS & EXCURSIONS FUND (CSEF)

School camps provide children with inspiring experiences in the great outdoors. Excursions encourage a deeper understanding of how the world works while sports teach teamwork, discipline and leadership. All are a part of a healthy curriculum.

CSEF is provided by the Victorian Government to assist eligible families to cover the costs of school trips, camps and sporting activities.

If you hold a valid means-tested concession card or are a temporary foster parent, you may be eligible for CSEF. A special consideration category also exists for asylum seeker and refugee families. The allowance is paid to the school to use towards expenses relating to camps, excursions or sporting activities for the benefit of your child.

The annual CSEF amount per student is:

- \$154 for primary school students
- \$256 for secondary school students

HOW TO APPLY

New applicants should contact the school office to obtain a CSEF application form or download from the website below.

If you applied for CSEF at your child's school last year, you do not need to complete an application form this year unless there has been a change in your family circumstances.

You only need to complete an application form if any of the following changes have occurred:

- **new student enrolments:** your child has started or changed schools this year.
- **changed family circumstances:** such as a change of custody, change of name, concession card number, or new siblings commencing this year.

Check with the school office if you are unsure

MORE INFORMATION

For more information about CSEF visit:

<https://www.vic.gov.au/camps-sports-and-excursions-fund>



Wellbeing Wrap-Up

Neisha Gange – Assistant Principal

School-Wide Positive Behaviour Support at Dillbadin Primary School:

Rewards Systems at Dillbadin Primary School:

We have a Whole-School Reward system in place at Dillbadin Primary School.

1. All staff across the school acknowledge students for meeting the expectations outlined on the DPS Matrix of Expectations (Be Safe, Be a Learner, Be Respectful). Students receive a coloured token when this acknowledgement is made. They place this token in tubes kept in each classroom.



2. Each time a class fills a tube, they receive a class reward. These can include movie days, special lunches, time on the bikes, and dress-up days, as well as lots of other special activities. Students can bank up their tubes to receive bigger rewards.



3. When a tube is full, the class receives a leaf at Assembly on Fridays to place on the whole school tree. When the tree is full, it is time for a whole school reward! Students are currently voting on the next whole school reward- only 9 leaves to go!





Star Student Awards

JUNIOR

Avah for having a settled start to DPS and the Junior room.

MIDDLE

Vira for working hard to improve her handwriting this week. Well done!

SENIOR

Faiq for his brilliant work all week. You've been able to avoid distractions and produce a very high standard of work!

SPECIALISTS

Kaira for her being an enthusiastic participant in Performing Art! Keep up the great job!



Star Student Awards





Values Awards

JUNIOR

BE A LEARNER:

Sebastian for doing an amazing job in maths this week and working hard during our mass and capacity games!

MIDDLE

BE RESPECTFUL:

Kenzie for always being respectful to her classmates.

SENIOR

BE A LEARNER:

Mason, for his amazing work in Maths this week! Your understanding of multiplication and division is coming along in leaps and bounds.



Values Awards





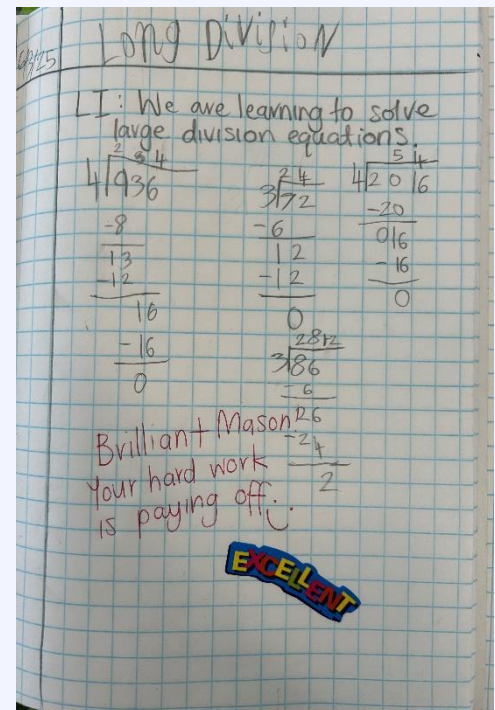
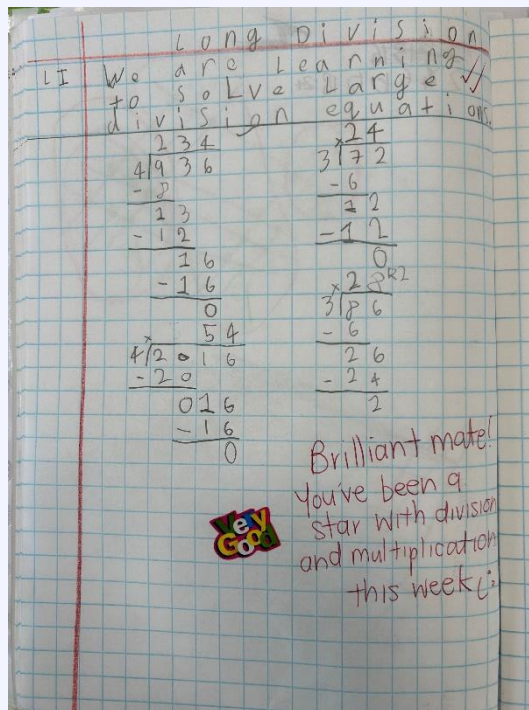
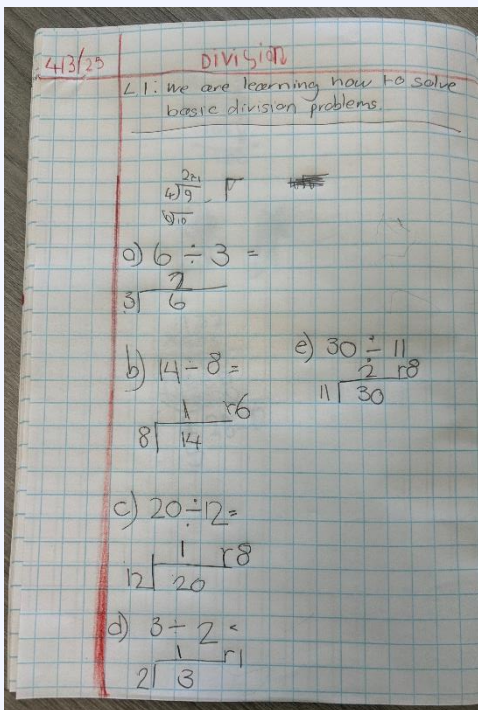
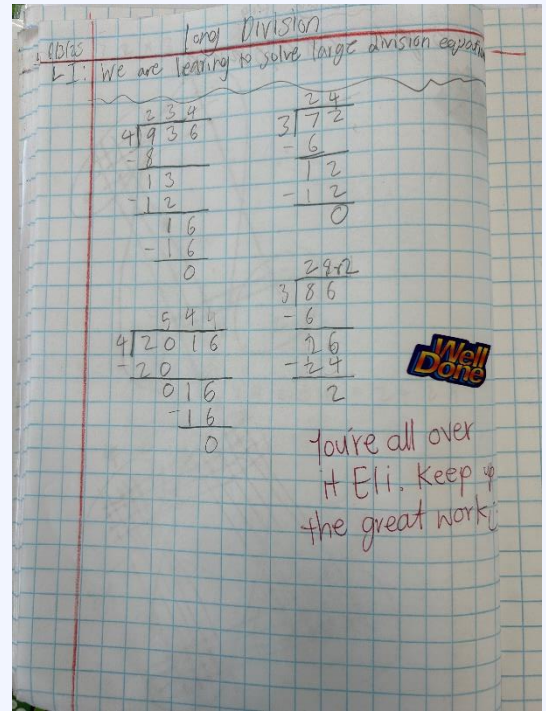
Middle Class



Our students are having a blast with our new bikes, which have quickly become a favourite class reward. We're also thrilled to kick off Bike Ed at our school soon!



Senior Class



This week, the Senior students have been focusing on division and multiplication. These key skills strengthen their number sense and improve problem-solving abilities. Keep up the great work, everyone!



School Wide Positive Behaviour



Our students earned 6 leaves
the past week which is **600**
acknowledgement of positive
behaviour.

Amazing work everyone!



Important Dates

Date	Event
Every Friday	3:00pm School Assembly
Monday 10 th March	Labour Day Public Holiday – no school
Friday 4 th April	Last day of Term 1 – 2:30pm dismissal
Tuesday 22 nd April	Term 2 starts
Wednesday 23 rd April	School photos

SCHOOL ENROLMENT FOR 2026



Electronic enrolments are now available for Dillbadin Primary School. However, we will still need a copy of the student's birth certificate and immunisation status, which can be uploaded to the enrolment system. We will also continue to take paper enrolments where necessary.

Dates for 2026 Foundation Students:

Submit an enrolment application by Friday, 25 July 2025.

You will be notified of the outcome of your application between Monday, 28 July, and Friday, 8 August 2025.

If you receive an enrolment offer, you should accept the offer by Friday, 22 August 2025.



Dillbadin
PRIMARY SCHOOL
Growing through learning

CURRENT CURRICULUM

Our teaching and learning follows Victorian Curriculum and we ensure it's customised to the needs of students.

TEACHER QUALITY

The teachers are inclusive and supportive, skillfully differentiating their approach to meet each child's needs while building strong, meaningful relationships that go above and beyond expectations.

FACILITIES COMPLETED IN 2024

The school has a state-of-the-art facilities, acoustically designed to create an optimal learning environment for children.

SUPPORTIVE ENVIRONMENT

The teachers foster a nurturing and supportive environment where every student feels valued, encouraged, and empowered to thrive.



WE WELCOME NEW PARENTS TO OUR PREP INFORMATION SESSION

 Tuesday 18th March - 10am

CONTACT DETAILS - TO BOOK IN

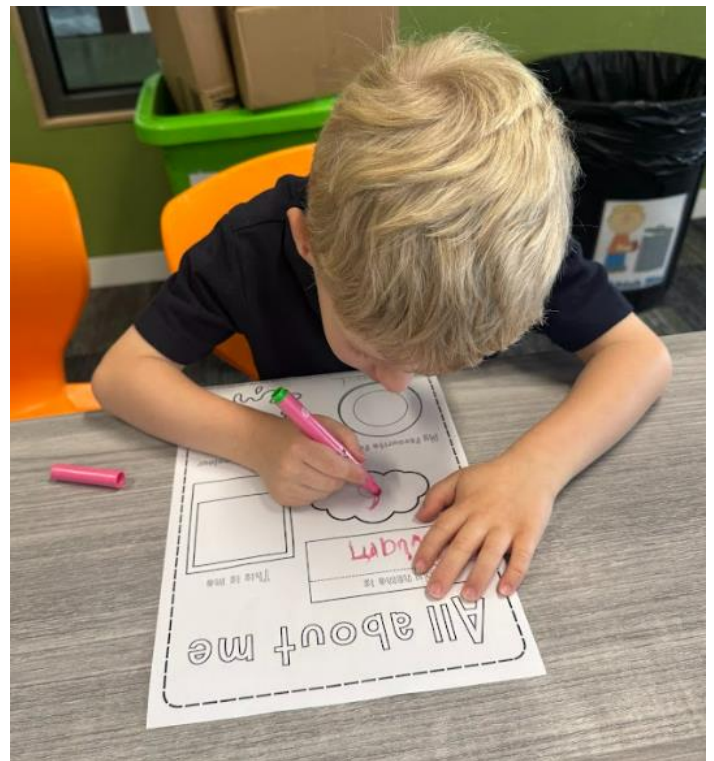
 03 9762 2510

 dillbadin.ps@education.vic.gov.au

 www.dillbadinps.vic.edu.au

For more information regarding enrolling your child in primary school in 2026 including timelines please click on the link below:



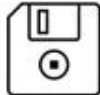



[Enrolling in primary school for 2026](#)



Digital Enrolment Parent/Carer Quick Reference Guide

Enrolling your child is quick and easy using your laptop or desktop

Before you begin

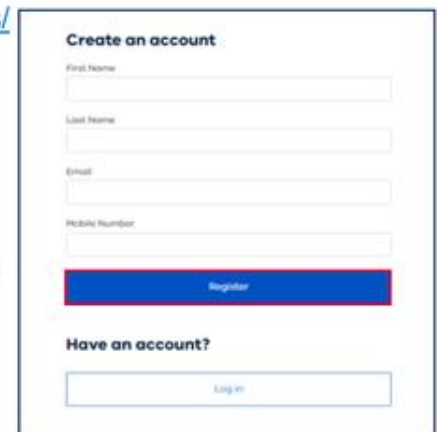
 Google Chrome is the recommended browser	 Use of a laptop or desktop is recommended	 Use the Save button if you need to walk away
 Ensure your listed Emergency contact is someone other than Adult A or Adult B	 Check your details are complete before submitting <i>You can't edit after submission</i>	 Have all your digital documents ready as they must be uploaded to your application <i>e.g. Birth certificate, Proof of Address, Proof of Residency</i>

Finding your designated neighbourhood school

Use [Find My School](#) to view a map of available government schools in your area, including your designated neighbourhood (local) school.

Register for an account

1. Click the following link: <https://students.educationapps.vic.gov.au/s/>
2. Scroll down and select **Register**
3. Read the acknowledgement and select **Continue**
4. Enter the requested details
5. A verification email will be sent to your inbox (check spam folder)
6. Click the link that has been emailed to you to complete registration
7. You will be prompted to set a new password
8. Select **Change Password**
9. You will land on the portal homepage



The screenshot shows a registration form with the following fields and buttons:

- Create an account** (Section Header)
- First Name:
- Last Name:
- Email:
- Mobile Number:
- Register** (Blue button)
- Have an account?** (Section Header)
- (Link field)

Ongoing access to the portal

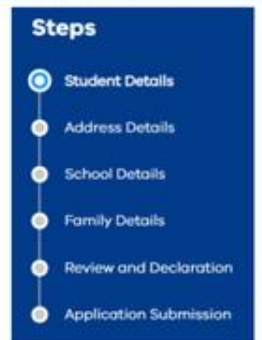
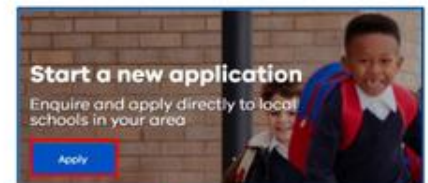
1. Select the following link: <https://students.educationapps.vic.gov.au/s/>
2. Enter your credential details
3. Select **Log in**
4. When logging in on a new device, you will be prompted for a verification code
 - check your email for the code
 - enter code and select **Verify**
5. You will land on the portal homepage
6. To log out, navigate to the drop-down menu and select **Logout**



Submitting an application

1. From the portal homepage, select **Apply**
2. Enter new school application details
3. Read the **privacy notice** and then select **Continue**
4. Enter details for each section (including documentation upload)
5. Read **Review and Declaration** and check all details have been provided and are correct

Note: Once an enrolment enquiry is submitted, enrolment details cannot be edited via the Portal
6. Select **Submit**
7. The **Application Submission** screen will appear and then select **Close**
8. You will be taken to your application list

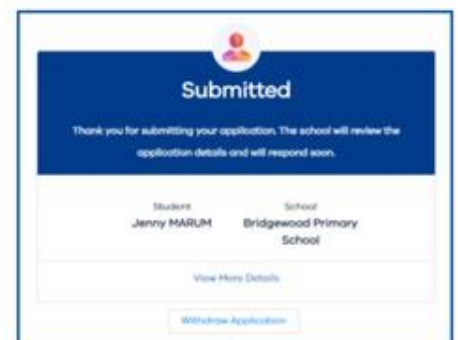


Viewing, withdrawing or adding files to an application

1. In the portal, select **application number** to view details, including status

My Applications					
Application	Type	Student	School	Requested Start Date	Status
APP-0777	New Enrolment	Jenny MARUM	Bridgewood Primary School	2023 Term 2	Submitted

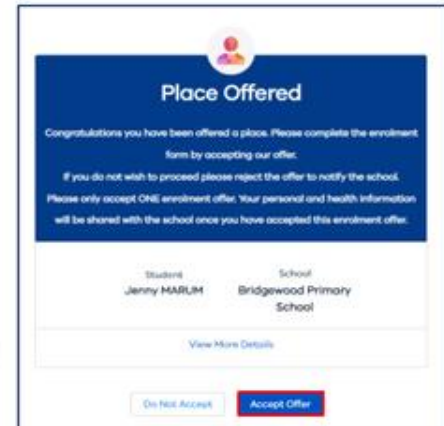
2. You can monitor the application status along the top status bar, view application details, withdraw the application or view and upload files
 - **To withdraw:** select **Withdraw Application**, enter a reason and the application will be closed
 - **To add files:** select **Add Files** at the bottom of the browser and follow instructions



Accepting or not accepting an enrolment offer

IMPORTANT NOTE: Please only accept ONE enrolment offer. All enrolments **must** be accepted via the portal.

1. When a school makes an offer of enrolment, you will be notified by email and the status in the portal will be updated
2. Select the link in the email, and you will be redirected to the portal
3. In the portal, **My Applications** will display **Place Offered**
4. Select **application number**
5. Select **Accept Offer** to accept the enrolment offer (only accept ONE) and you will be prompted to provide additional information
6. Read the **privacy notice** and select **Continue** to proceed
7. Enter details for each section (including documentation upload)
8. Click **Submit**
9. When the school finalises the application, you will be notified by email notification and the status in the portal will be updated
10. If you received multiple enrolment offers, or you no longer wish to proceed with your enrolment application:
 - select **Do Not Accept** (for each offer to be declined)
 - enter a reason and the application will be closed



NOTE: Your personal and health information will be shared with the school once you have accepted an enrolment offer.

We are here to support you

If you have any questions regarding your enrolment, please contact your school. For information about this process, visit <https://www.vic.gov.au/how-choose-school-and-enrol>.